

# Career in Multilateral Development Banks

## Laisa Daza Obando

Consultant, Disaster Risk Management Specialist  
Global Program for Safer Schools  
World Bank HQ, Washington, D.C.  
[ldaza@worldbank.org](mailto:ldaza@worldbank.org)

## Ilsa Meidina

Senior Social Protection Specialist  
East Asia & Pacific  
World Bank Office Indonesia, Jakarta  
[imeidina@worldbank.org](mailto:imeidina@worldbank.org)

## Ari Perdana

Senior Evaluation Specialist  
Independent Evaluation Department  
Asian Development Bank, Manila  
[aperdana@adb.org](mailto:aperdana@adb.org)

# What will be discussing?

---

- MDB: an Overview
- Working in an MDB: our stories
- Thinking of applying?

# MDB: an Overview

---



# What are MDBs?

- International financial institutions
- Aiming to promote development in low-income countries
- Chartered by member countries (multiple shareholders), subject to international law
- Provide development financing as well as other technical expertise



# What areas do MDB support?

---

- Infrastructure (classic public goods)
  - Emerging areas (climate, clean energy, disaster, smart cities, etc.)
- Poverty reduction (health, education, social protection, gender, community development).
- Trade, governance, economic reforms
- Private sector financing
- Budget support
- Emergency assistance (not humanitarian relief)



# Why borrow from MDBs?

---

- Volume, interest, tenure
- Knowledge and technical assistance
- Credibility and leverage
- **But:** more due diligence; lengthy preparation and approval process; politically sensitive.



# Working in an MDB

---



# What are the jobs available? What skills that are needed?



	Core/operational	Non-operational
Sector specialist (e.g., finance, energy, finance, education, etc.)	Project preparation Project management Monitoring	Knowledge management Evaluation Research Partnership
Safeguards (environment, climate change, resettlement, gender, poverty)		
Economist	Country programming Cost-benefit analysis	
Other	Project management Policy dialogue	Legal Procurement Finance/accounting Human resources External relations Etc.



# What do we do at work? | Laisa – Disaster Risk Management

## Global Program for Safer Schools:

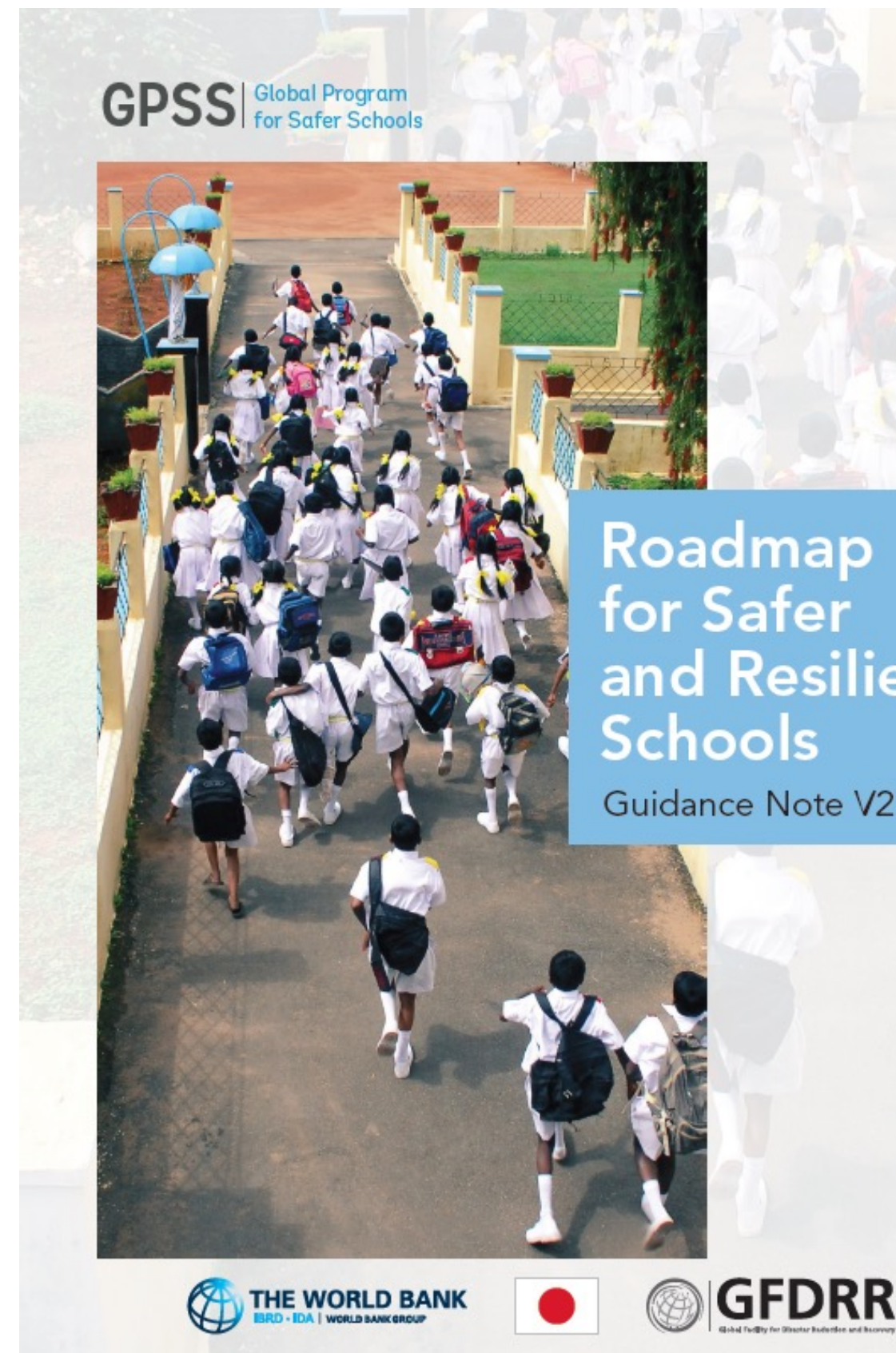
- Analytics for efficient investments and integrated solutions (Resilient, Green, Inclusive, Learning-oriented School Infra)

## Bank Operations and Analytics:

- Design and implementation of projects and technical assistance activities
- Disaster risk management in the Education sector (focus school infra)

## Skills:

- Sector + data analysis + project management



# What do we do at work? | Ilsa – Social Protection

## Analytical and Advisory Supports

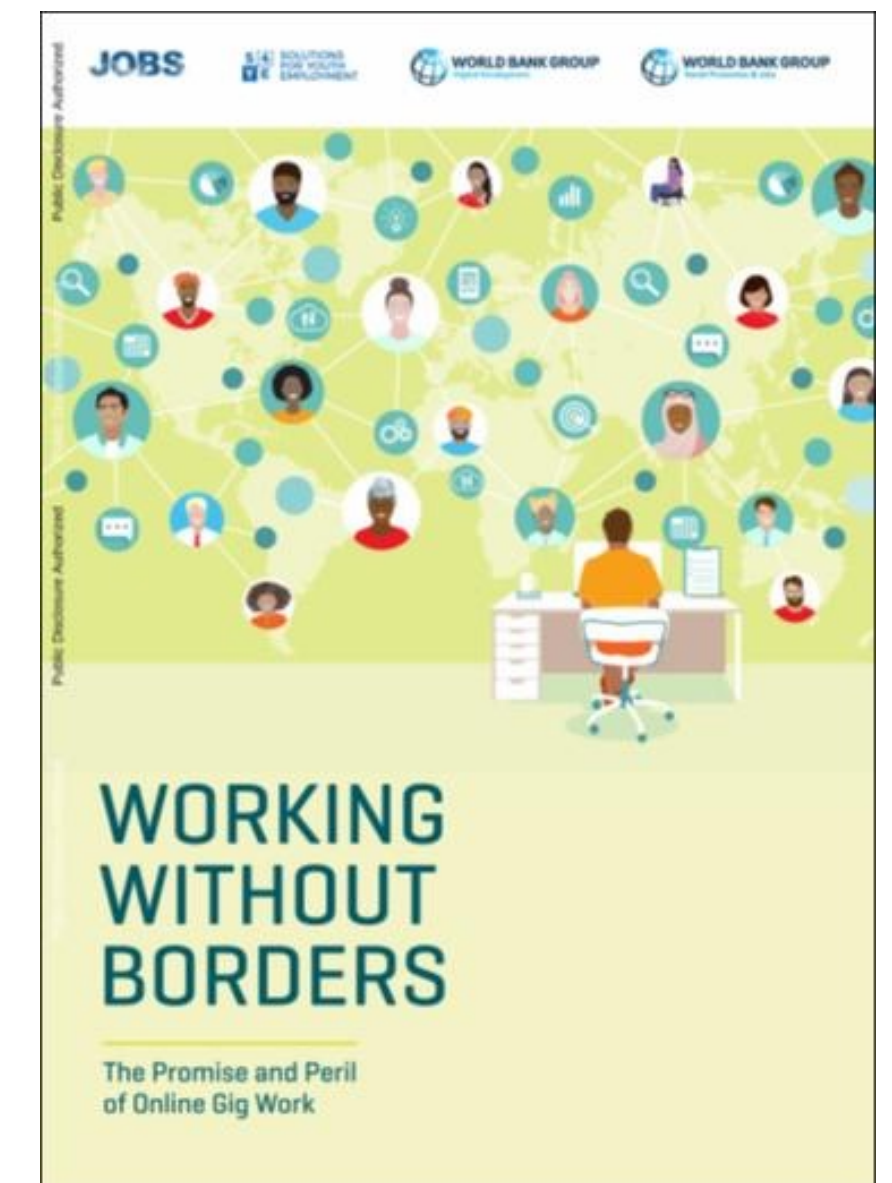
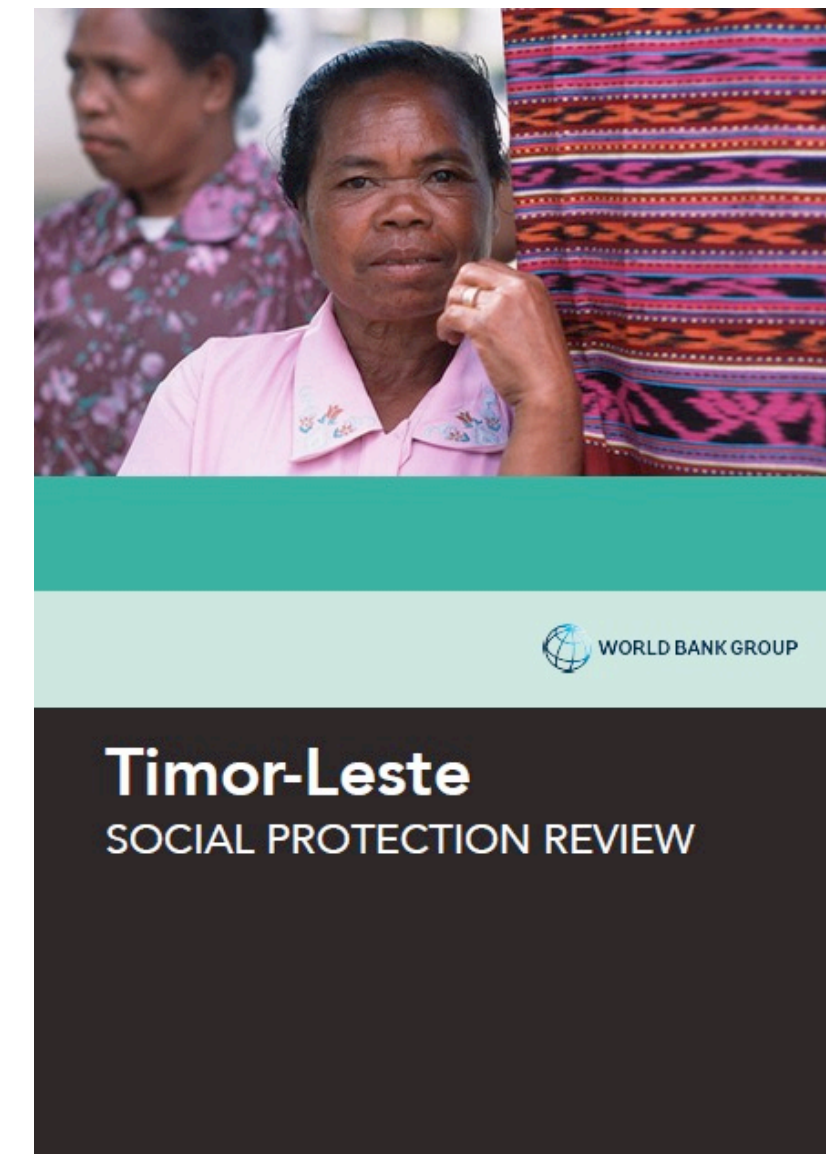
- Support to evidence-based policy making on topics such as social assistance, social insurance, jobs, and migration.
- Support to global and regional knowledge products (reports, policy notes)

## Operations and Financing

- Loan preparation and implementation using different instruments: project financing, budget support, results-based financing.

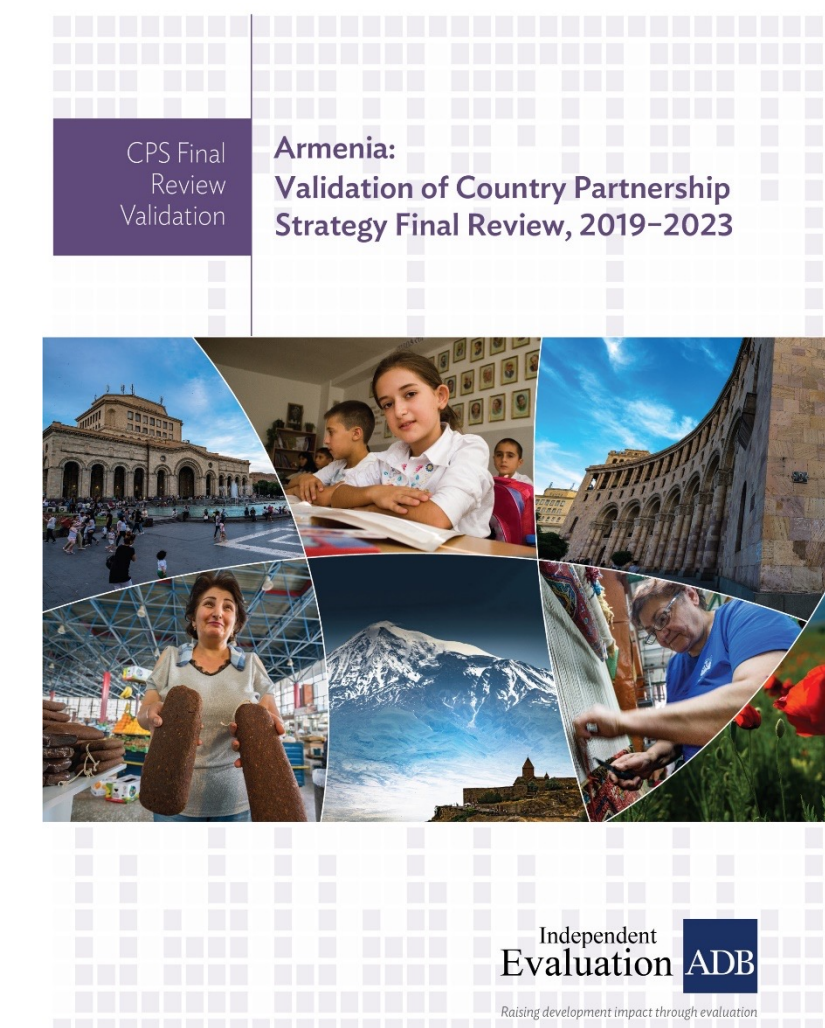
## Skills

- Sector knowledge, project & people management, research and data analysis, policy dialogue.



# What do we do at work? | Ari – Independent Evaluation

- **Evaluation:** accountability and learning
  - Do we do the right thing; do we do things right?
  - What works, and what doesn't?
- **Skills:** sectoral + evaluation
- Mixed-method; mostly qualitative (but having a 'quantitative perspective' helps)



Thinking of applying?

News and Events ADB Institute Contact English

WHO WE ARE WHAT WE DO WHERE WE WORK **WORK WITH US** Search

## Careers at ADB

With employees from more than 60 countries, ADB is a place of real diversity. Join us to find fulfillment in sharing your knowledge and skills, and be a part of our vision in achieving a prosperous, inclusive, resilient, and sustainable Asia and the Pacific.

Main Opportunities What We Look For What We Offer Other Programs FAQs Contacts

# What are the types of employment?

Types of employment		Types of recruitment	
		International	Local
Staff	Regular Young professional (<32 years)	Requires mobility	No mobility Requires right to work
Consultant	Short-term Long-term	Can be based anywhere Requires international travel	Requires right to work Domestic travel only
Internship			

# What to pay attention to?

---

- Nationality (country membership).
- Local or international recruitment.
- Job description and selection criteria. Some will have “screening questions.”.
- Required experience – it reflects the employment level/position, and the job.
- Education: Master’s is a minimum; Ph.D. can substitute years of experience.
  - Some jobs requires a Ph.D. (typically research department).

**EMPLOYMENT APPLICATION**

Please complete this form **USING BLACK OR BLUE INK** and write within the boxes in **CAPITAL LETTERS**. Mark appropriate answer boxes with a **CROSS**. Start at the left of each answer space and leave a gap between words.

**Personal Information**

First Name

Surname

Date of Birth

Gender  Male  Female

**Contact Information**

Residential Address

Postcode

Phone

Mobile Phone

Fax Number

E-mail Address

# Resources

---

- ADB
  - [Current Opportunities | Asian Development Bank \(adb.org\)](#)
  - [Tenders | Asian Development Bank \(adb.org\)](#)
  - [ADB International Staff Salary Structure](#)
- World Bank
  - [Careers \(worldbank.org\)](#)
  - [World Bank HQ Salary Scale](#)



Contact us:

---

[l.dazaobando@student.maastrichtuniversity.nl](mailto:l.dazaobando@student.maastrichtuniversity.nl)

[i.meidina@student.maastrichtuniversity.nl](mailto:i.meidina@student.maastrichtuniversity.nl)

[a.perdana@student.maastrichtuniversity.nl](mailto:a.perdana@student.maastrichtuniversity.nl)