

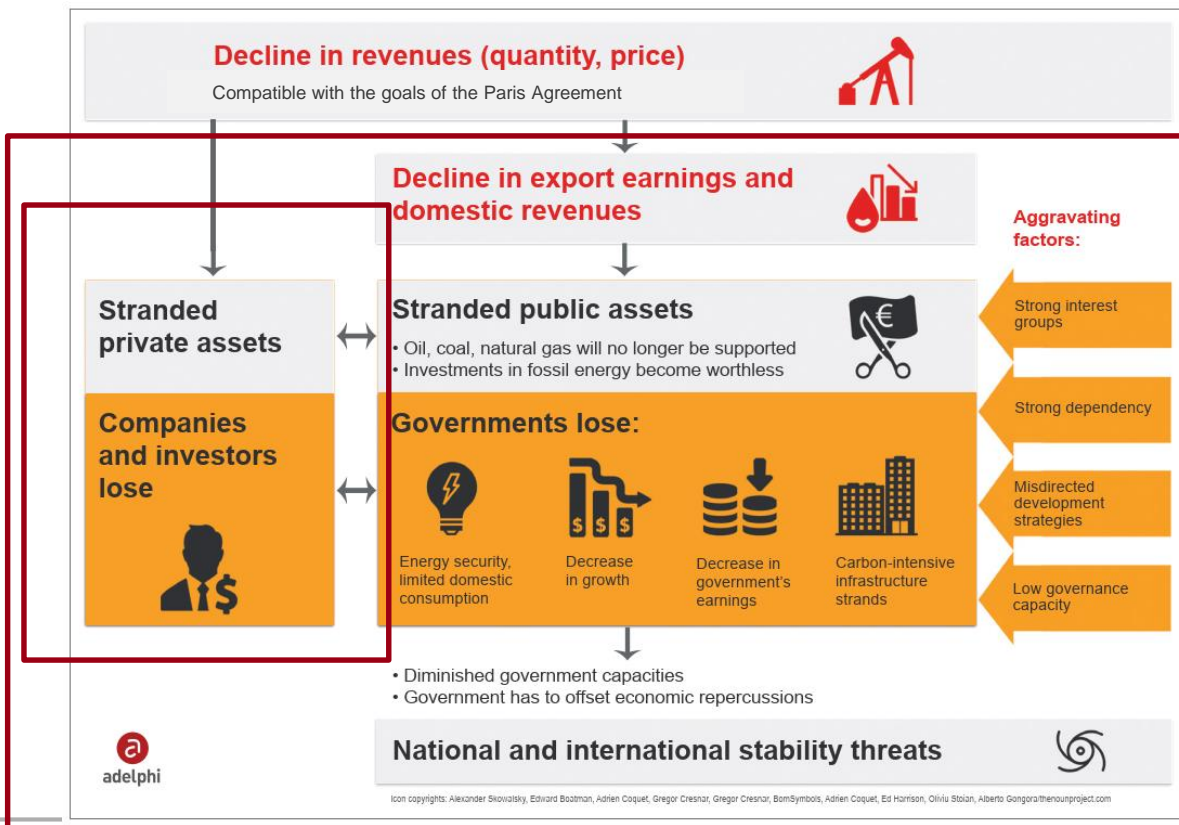


# **Coping with stranded assets: entry points**

**UNU-INRA WEBINAR: COVID-19 and fossil fuels in Africa (1 July 2020)**

Daria Ivleva, Project Manager, adelphi

# Stranded assets – beyond the private sector

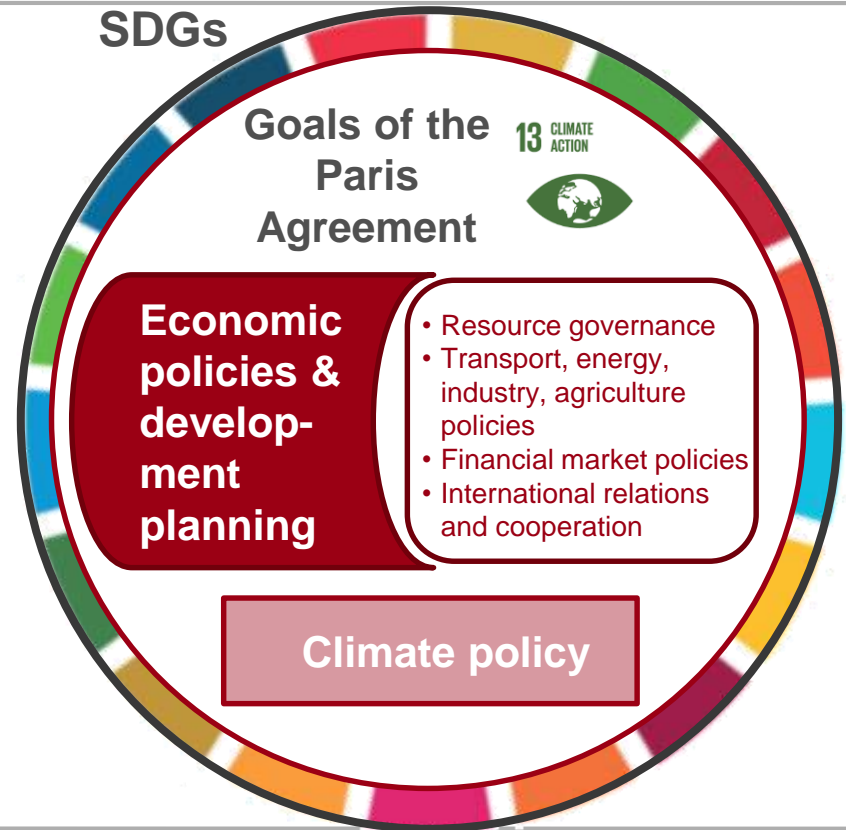


# Entry points for an “exit strategy”



In light of the pandemic:

- Well-managed transition early on reduces risks
- Especially important in times of strained budgets...
- ...and in a challenging geopolitical landscape



**Daria Ivleva**  
Project Manager  
ivleva@adelphi.de

**adelphi**

Alt-Moabit 91  
10559 Berlin  
Germany

T +49 (0)30-89 000 68-0  
F +49 (0)30-89 000 68-10

[www.adelphi.de](http://www.adelphi.de)  
[office@adelphi.de](mailto:office@adelphi.de)